

base

re-building brisbane's ferry terminals

Brisbane is an emerging city

committed to being identified in the

wider region as a good example of

sub-tropical urban design.

The ferry network is central to life on Brisbane's river and riparian zone and connects many of its parks and cultural landmarks. The terminals will need to be clearly legible on a number of levels; symbolic of Brisbane as an emerging city; and in their immediate local context; while maintaining their pragmatic requirements as part of the larger integrated transport network. While the efficiency, safety and amenity to passengers is paramount, the experience that can be gained through their use is equally significant. These terminals will need to provide a high level of benefit for Brisbane, with the ability to withstand whatever the city's future may bring. This needs to be delivered at a cost that is reflective of their true value to Brisbane.

[In-tent] is the planning and desire to perform an act, to fail to do so, or to achieve a state of affairs

An emerging city

needs an emerging vision.

Throughout Brisbane's history, there have been many who have helped shape what this city has become. Now an opportunity exists for a new vision. This new vision represents the values and identity that Brisbane is known for, but allows scope for the next wave of ideas that will help define Brisbane as a nucleus of design and innovation. The terminals will be a beacon for tourists looking to navigate throughout the city and provide efficient movement for commuting across the city.

[Phi·los·o·phy] is the study of general and fundamental problems, such as those connected with existence, knowledge, values, reason, mind, and language inform the public about the local area.

South Brisbane 1868



North Quay 1913



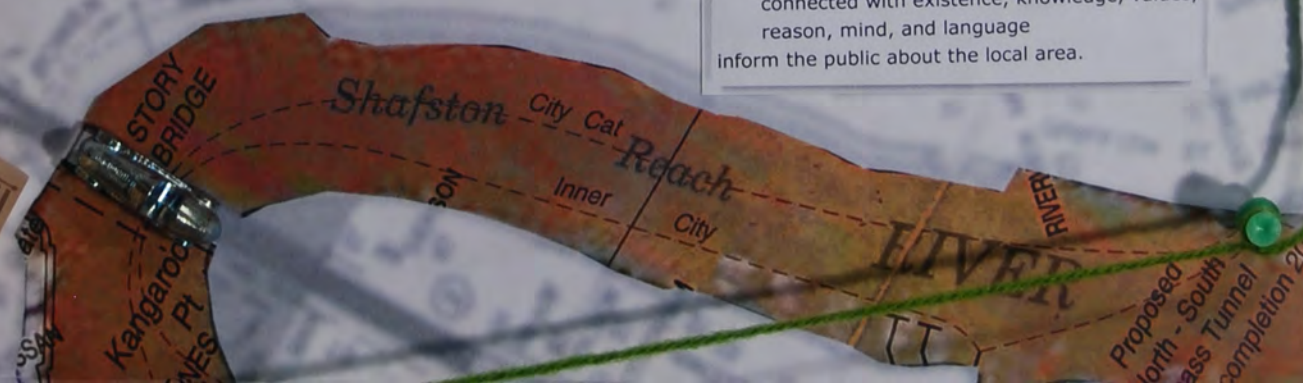
Bulimba 1929



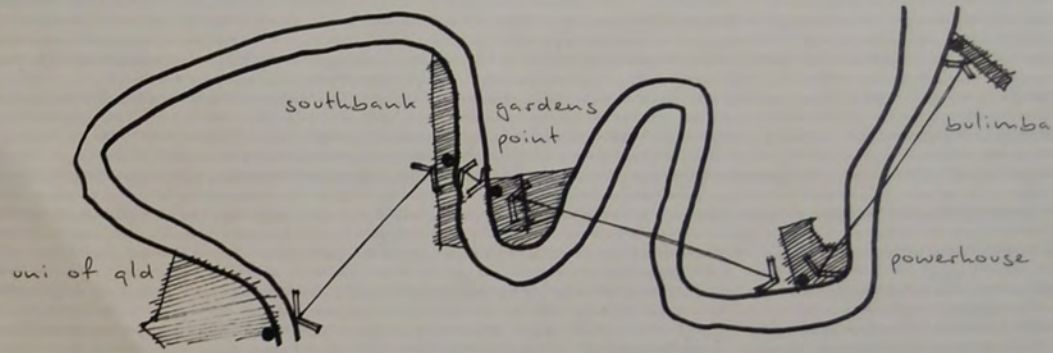
New Farm 2002

River crossings developed out of necessity, beginning with simple row boats, and has turned into an important part of the public transport network.

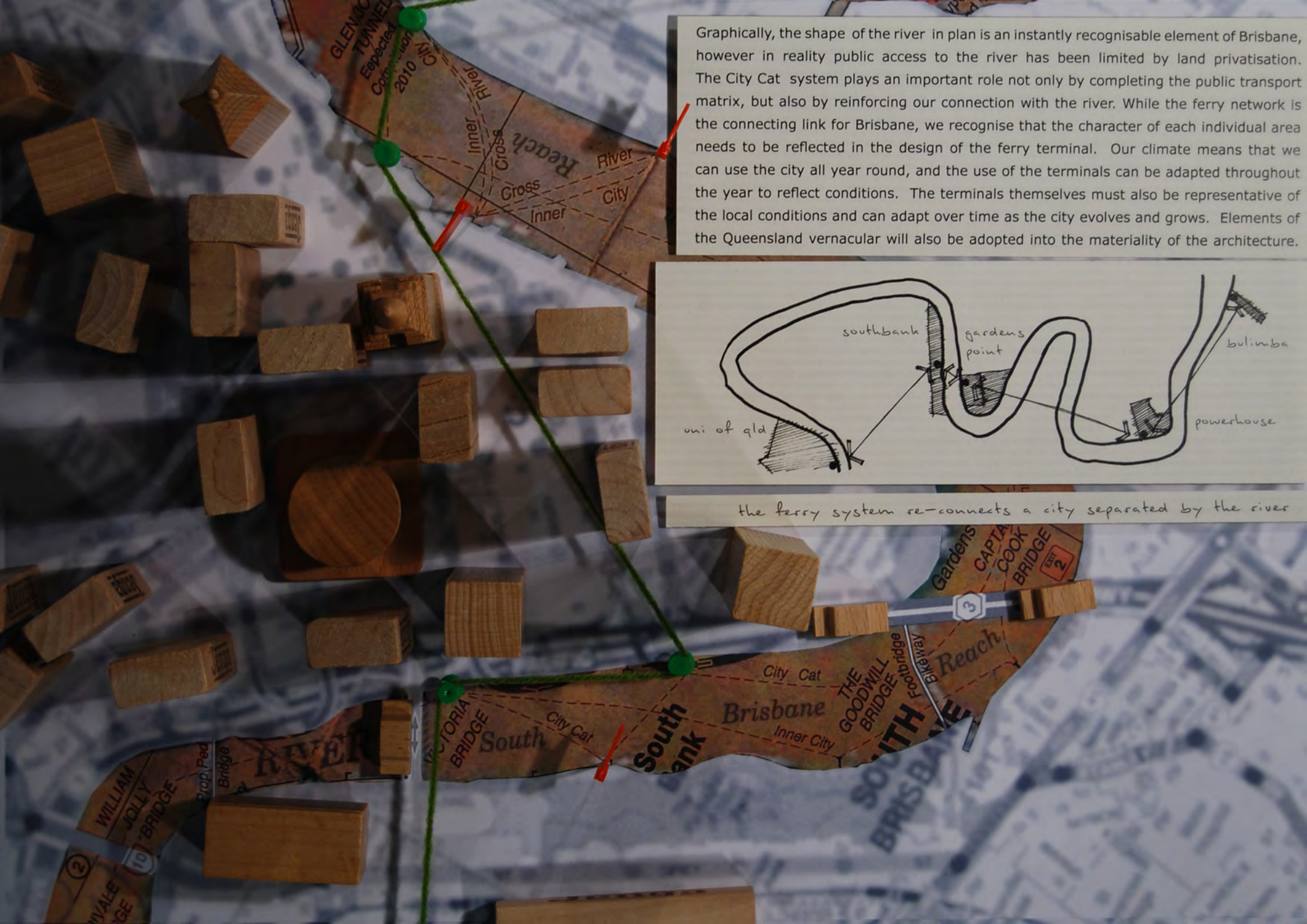
To continue to support the city well into the future, the terminals themselves must be representative of the local conditions and can adapt over time as the city evolves and grows.



Graphically, the shape of the river in plan is an instantly recognisable element of Brisbane, however in reality public access to the river has been limited by land privatisation. The City Cat system plays an important role not only by completing the public transport matrix, but also by reinforcing our connection with the river. While the ferry network is the connecting link for Brisbane, we recognise that the character of each individual area needs to be reflected in the design of the ferry terminal. Our climate means that we can use the city all year round, and the use of the terminals can be adapted throughout the year to reflect conditions. The terminals themselves must also be representative of the local conditions and can adapt over time as the city evolves and grows. Elements of the Queensland vernacular will also be adopted into the materiality of the architecture.



the ferry system re-connects a city separated by the river



...an adaptable architectural form emerges linking city and place. Through history, journey and experience it captures the memory of the evolving city that we know, and that which is yet to occur...

[Vi-sion] comprising inspirational renderings, generally of a future state

The emergence of BASE as an architecture

practice has been recognised through the HEAT campaign demonstrating the attitude of

Queensland design to the world.

Being based in Brisbane, we appreciate this city, and the lifestyle it offers. We've built a reputation on creating interesting and insightful interactions between people, place and architecture. There are unique pockets within the city that are connected by the river that are special to us. Responding to the individual character of these places through perceptive design is something that we feel is important.

[I.de.a] a thought or suggestion as to a possible course of action or; connecting Brisbane together as a beacon

As the Project Director for the project, Shawn brings 15+ years of experience as an internally respected Architect to the team. His primary role is working with the client to ensure the quality and integrity of the project.

Kelly can draw on her previous role as Project Manager working on a large project in the South Bank area. She will be responsible for the daily management of the project while offering design input.

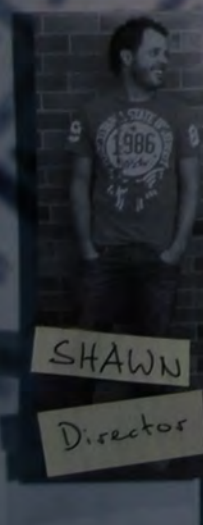
Having worked in both private and public sectors, Julie will bring a wealth of knowledge to her role as part of the Project Team. She will also assist Shawn and Kelly in design and the management of the project.

Having worked for local government, Chris brings experience in public buildings to the team. He will also take responsibility for the project documentation.

As part of the Project Team, Sarah brings a wealth of experience having worked on government projects aimed at large user groups. Sarah will co-ordinate the documentation and delivery of the project.

We know that there are a number of other specialists that need to have their input on the design. These consultants will need to share our vision for the design and have an ability to bring it to fruition.

BASE Architecture is a multi award winning firm committed to producing only the highest quality of architecture. As we continue to expand we are further broadening our experience across many disciplines. Coming from a strong residential background we have been building on this to be now involved in a larger cross section of projects ranging from residential, medical, commercial, interiors and hospitality. We even have some ferry terminal experience in our folio, with a project in Lucky Bay in South Australia's Spencer Gulf. We aim to produce the most extraordinary architectural designs that enrich not just the occupants, but also the city around it. With creative solutions and a passion to explore a wide range of concepts and ideas BASE will always produce unique projects to which others aspire.



SHAWN
Director



CHRIS
Graduate



KELLY
Associate



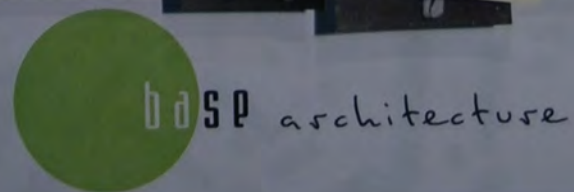
SARAH
Graduate



JULIE
Associate



external
consultants



204 Days Road GRANGE QLD 4051
PO Box 165 GRANGE QLD 4051
T 07 3352 5899 F 07 3352 5766
E info@basearchitecture.com.au
W www.basearchitecture.com.au