

healthcare

version 3



• • • • • we connect the dots • • • • •

about base

Base is a boutique, multi award winning firm committed to producing only the highest quality of architecture and interiors. It was established in 2005 and is headed by director Shawn Godwin. **Base** is recognised for inventive thinking, creative flair and outstanding service. We may be a small firm, but we are a design powerhouse. Our capabilities are broad and continually evolving.

Base has a highly expert team specialising in the medical fit-out industry, with a strong background across a range of diverse medical sectors. Together, our team has delivered several projects for some of Australia's most prominent medical providers. We go beyond exterior elements of medical offices and also offer healthcare interior design for private practices and community clinics.

our services

- Spatial analysis
- General workflow review
- Design research
- Workshops with key staff to identify areas of concern
- Branding review
- Overall conceptual design
- Lighting and ambience
- Furnishings, finishes and equipment specification
- Complete coordination and documentation
- Contract administration

our view on healthcare

At Base, we understand that given its functional complexities, medical architecture starts with strategic planning. We encourage our involvement in the initial planning stage, drawing out what doctors and practice managers have in mind, and accommodating medical staff and patients' needs alike.

Understanding your practice:

We analyse in detail the experience in each area for all end users, so that areas are designed to provide efficient functionality in welcoming, relaxing spaces. The materials and equipment selected for each design are chosen to meet the requirements and needs of our client's particular medical practice, and to respond to both our client's budget and the design concept.

Understanding your patients:

With a broad array of specialty clinics in our portfolio, we understand that the overall design, both practically and aesthetically needs to respond to the needs of your patients, and what they are experiencing in life when they visit the clinic. Whether it is an exciting or distressing time, or for a particular condition, we design with your patients' comfort in mind.

The design asset:

We believe in the value that good design brings to our clients, therefore we focus on healthcare design that makes a significant difference in the way doctors, nurses, administration staff and patients experience the clinic.

We prioritise on patient well-being and comfort; creating unique medical facilities that play down the clinical aspects, and create warm and appealing settings that enhance the healing environment. A space where patients feel truly comfortable and calm. Spaces that patients would like to come back to.

case study: eve health 2



case study: eve health 2

snapshot

Obstetric, Gynaecology and IVF Specialist Clinic, Spring Hill

program

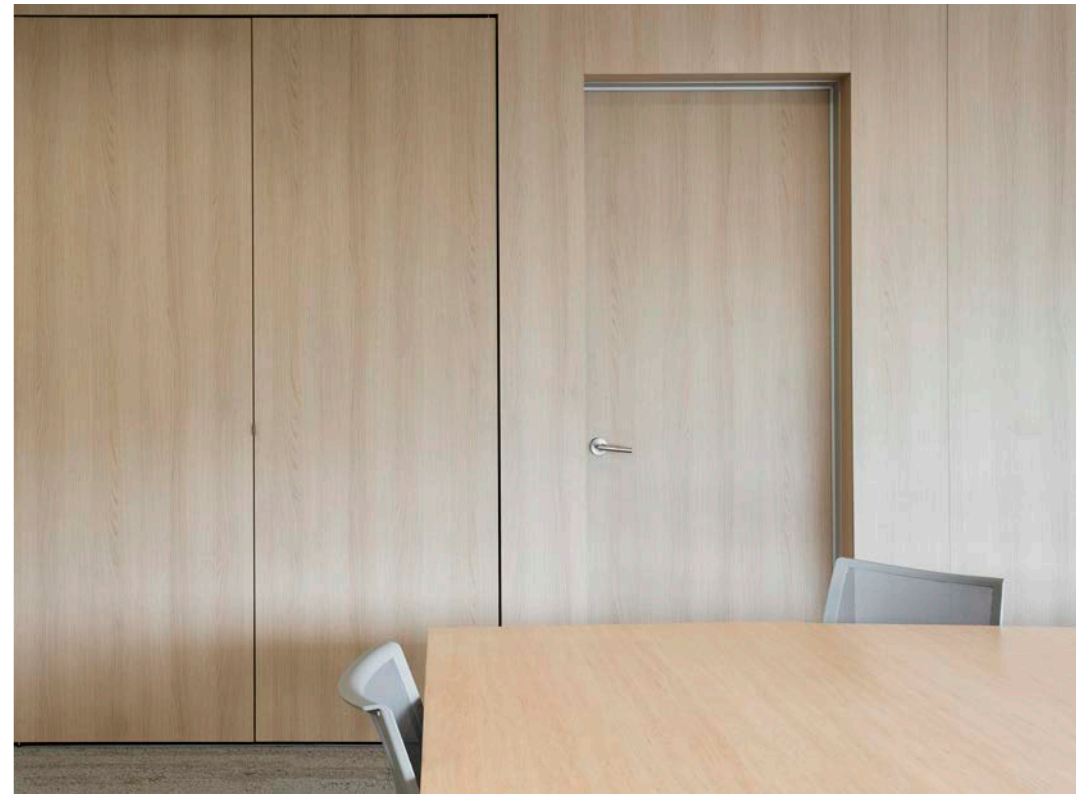
Public areas included a large reception, an open waiting area with separate zones for 25 patients including a play area for toddlers and a patient coffee area. The private clinical areas housed 13 consult rooms, 4 examination rooms, and a private counselling room. The spaces are supported by a separate administration area for 5 staff, a practice manager's office, large staff kitchen, and a multipurpose room that was to be used as a seminar room suitable for 30 people, an ante-natal class room or a Boardroom at different times.

Completion 2016 Area 626m²

project description

Attending to mostly female clients, the brief was for a high end, relaxed and timeless clinic that supported the company's patient-focused holistic care strategy. Subtle design strategies were implemented to support the notion of patient comfort and privacy. Pragmatic functions were grouped for efficiency. An analysis of patient privacy, layered over circulation planning, dictated the location of the functional areas. The reception was to be the sculptural verge between the private clinical areas and the common spaces. The waiting area was to seat a large number of patients simultaneously, but with a sense of intimacy and retreat. The scale of this open space was controlled by separate seating zones, change in floor finishes, hidden acoustic treatments and loose furniture placement. A dropped acoustic timber ceiling and subtle adjustable lighting created a sense of welcoming shelter.

For the client, this memorable space became the 'face' of the practice, and provided a strong physical brand identity, but for the patients using the area it was a space for casual conversation and support.



case study: eve health 2





case study: sunnybank 1



case study: sunnybank 1

snapshot

Obstetric, Gynaecology and IVF Specialist, Greenslopes

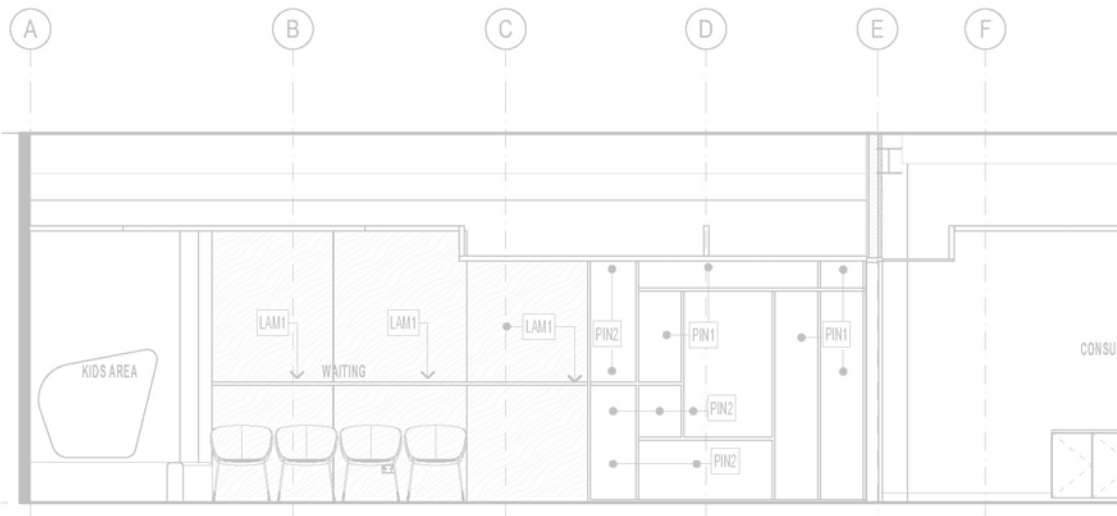
program

Main reception, waiting area including a family zone with kids play area, large consulting room with examination area, procedures room, kitchenette staff room, 2 and storage areas.

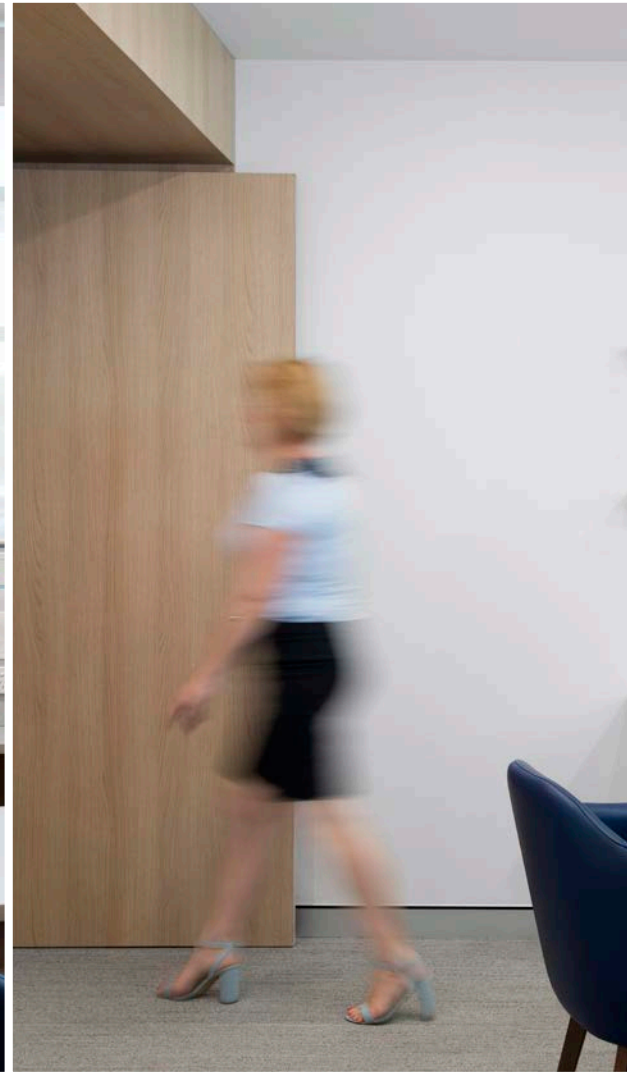
Completion 2018 Area 72m²

project description

A simple, quiet and calm fit out for an obstetric medical specialist in Brisbane. The brief was to have a space for everything including a small childrens' play area, achieved within a modest budget. The programme was uncomplicated and the finishes served as a simple backdrop, allowing for pops of colour to reflect the client's company branding and provide a sense of fun. Gentle curves in the joinery elements assist in the guiding of patients through the space towards the waiting area, and allow a sense of visual privacy for the reception staff by way of orientation.

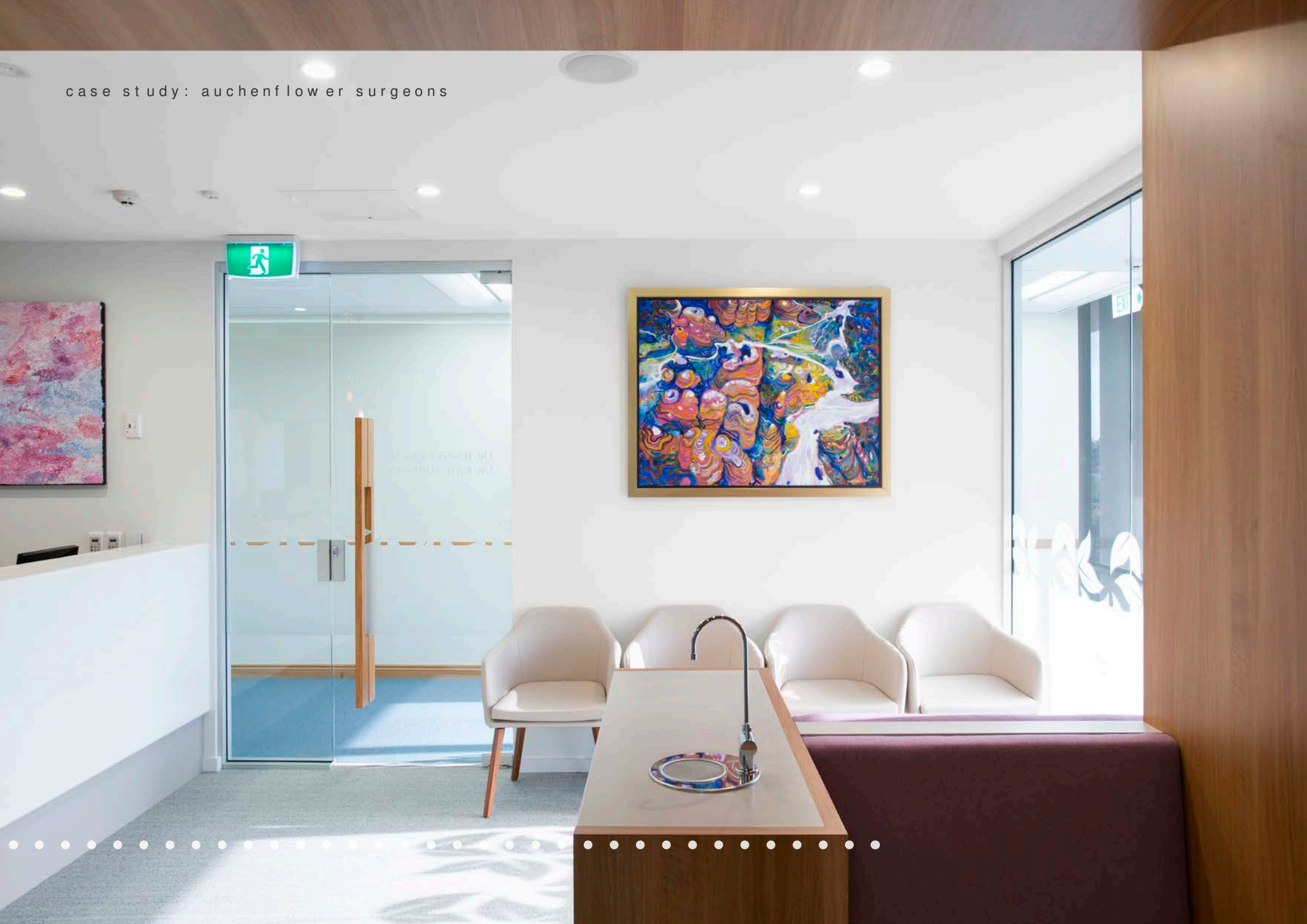


case study: sunnybank 1





case study: auchenflower surgeons



case study: auchenflower surgeons

snapshot

Breast and Endocrine Surgery, Auchenflower

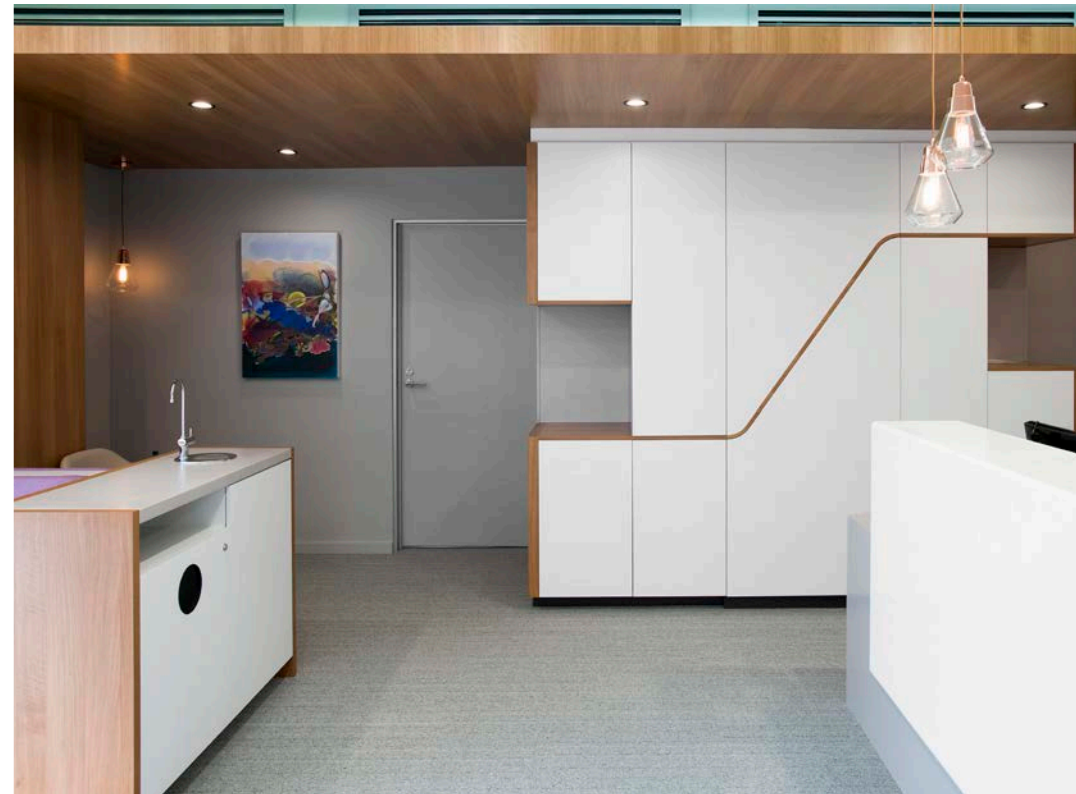
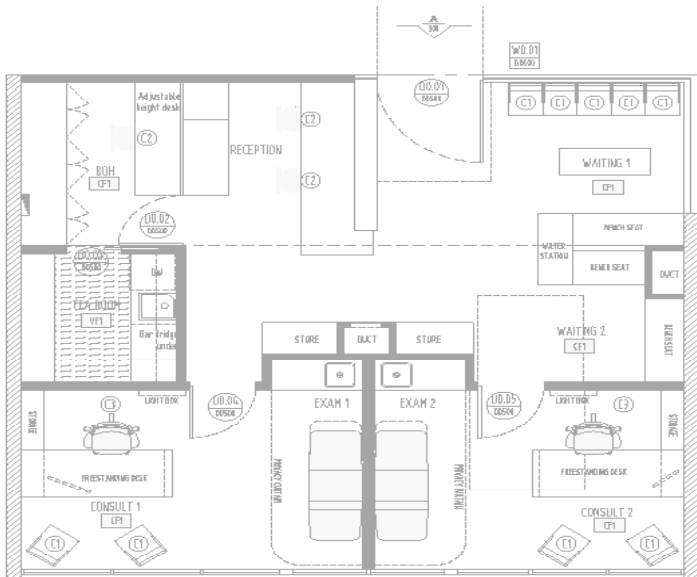
program

Reception and connected administration area, waiting zone with refreshment space, 2 consulting rooms, staff kitchenette and tea room

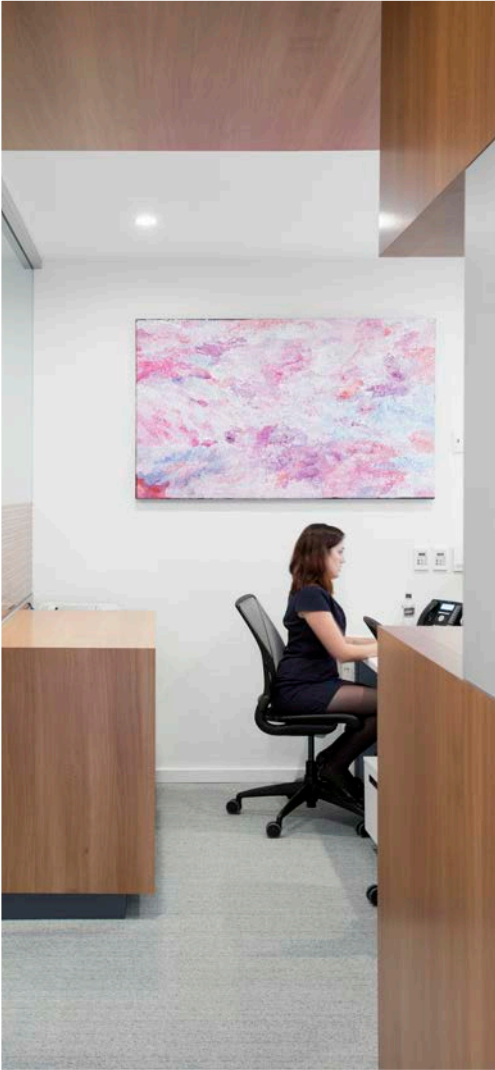
Completion 2017 Area 70m²

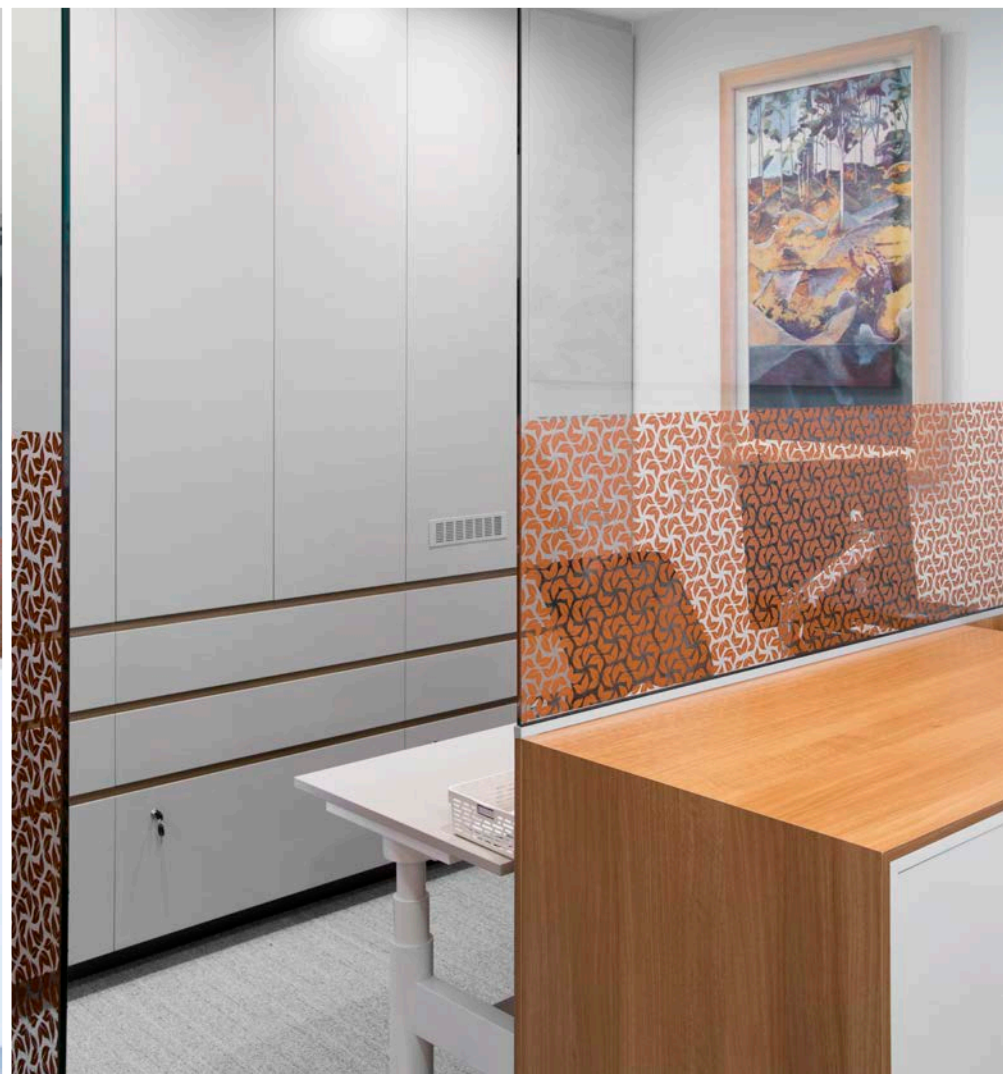
project description

The design of the new surgeons consulting rooms evolved from the desire to make a comfortable and welcoming environment for their patients. In contrast to a clinical operating theatre, we created a warm residential feel in this space by introducing timber textures, soft fabrics and engaging the mass of natural light afforded to this tenancy. With patient care and their experience being of high importance, this design caters to their needs, while still being highly functional and practical for the doctors.



case study: auchenflower surgeons





case study: a & r plastic surgery



case study: a & r plastic surgery

snapshot

Aesthetic and Reconstructive Plastic Surgery

program

Main reception, waiting areas, administration area, staff/meeting room, treatment room, consulting rooms, recovery area, utility and procedures room.

Completion 2013 Area 130m²

project description

The concept rotates around the impact of first impressions, the natural curves of the human body, and the notion of calculated/rational beauty. The practice was to reflect attention to detail, cutting edge technology, and passion for aesthetics.

The result is a central “admin pod”, created as the “face” of the practice; the main expression of individual identity. The idea was to create a calculated sculpture that gave the practice an identity that would stay in the memory of visitors and passers-by. The consulting rooms around it were to be rational and solid, resembling the bone structure behind the skin.

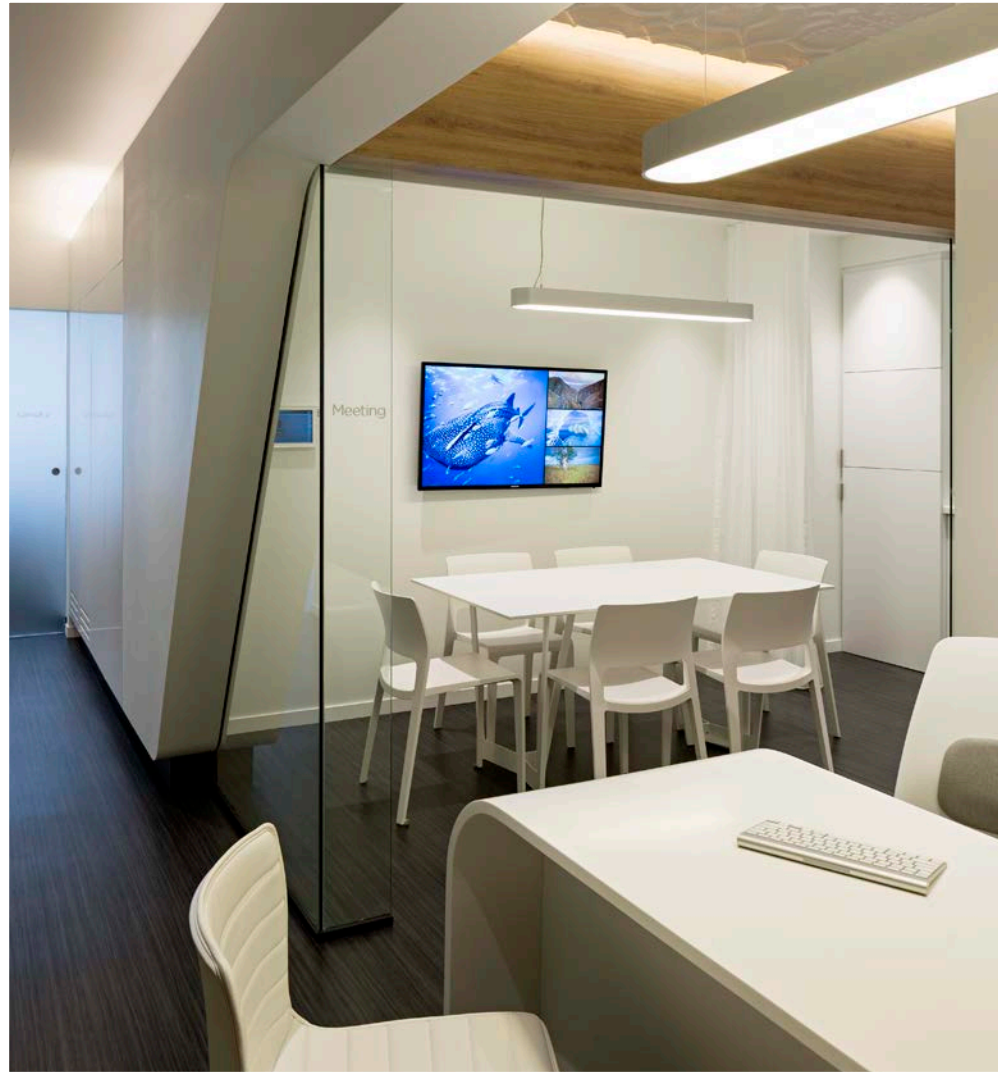
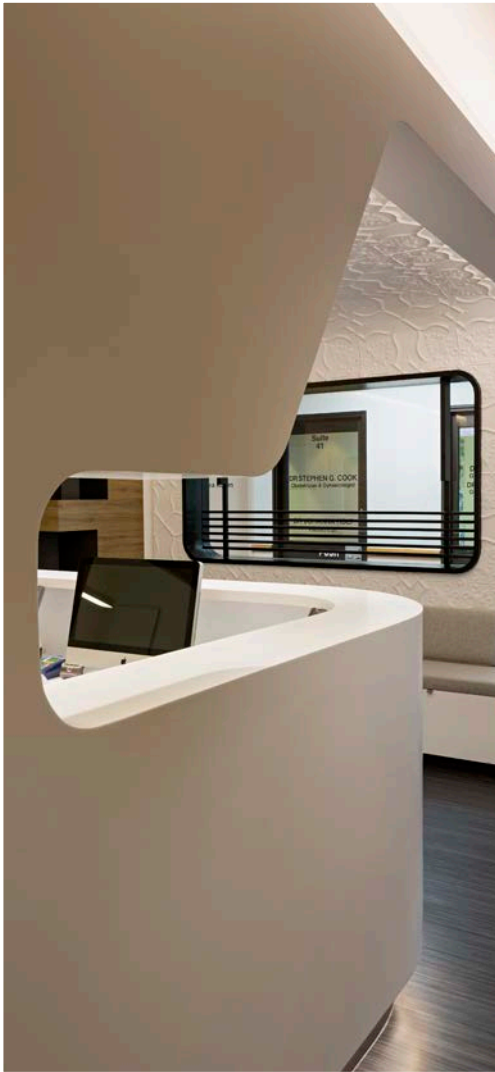
With patients and their experience as a priority, the project contributes to the development of medical environments that go beyond the practicality of the administrative and medical procedures. We concentrated on creating relaxing, warm spaces that feel more like a retreat, or spa, and less like a clinical space; as a way to contribute to the healing process by providing spaces where patients find comfort and support. The materials selected respond to the need to reflect a soft, gentle approach to patient care, and to a sustainable approach to durability and long term performance.

*"The response we've had from clients is overwhelming.
This is exactly what we wanted"*

- Leisa Cheng Practice Manager -



case study: a & r plastic surgery





case study: mt gravatt obstetrics



case study:mt gravatt obstetrics - Dr Rozeena Musa

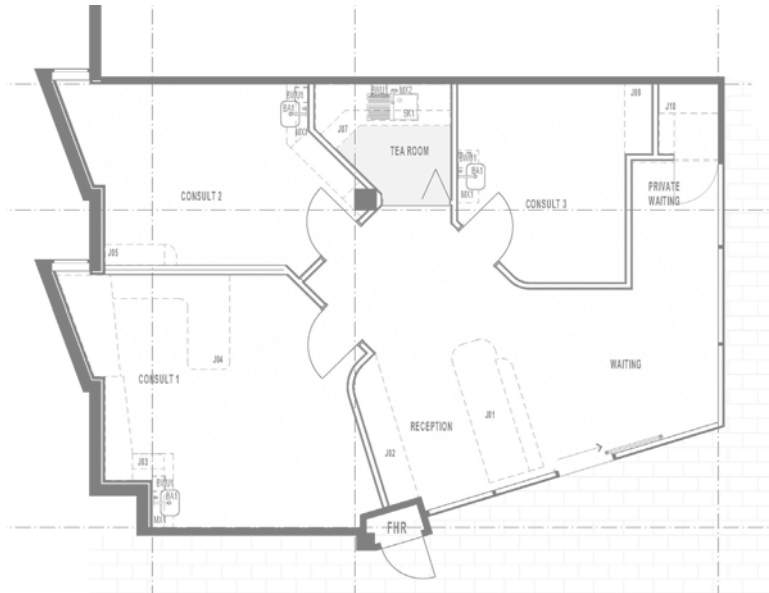
snapshot

Gynaecologist and Fertility Specialist.

Completion 2020 Area 80m²

project description

Designed to create a welcoming environment for its patients, the Mt Gravatt Obstetrics project included the design of a reception area for two staff, a waiting area for up to eight patients, three consultation rooms and a small kitchenette with ample storage included throughout.



case study: bhaps . brisbane hand and plastic surgery



case study: bhaps . brisbane hand and plastic surgery

snapshot

Hand and Plastic Surgery Clinic, Greenslopes

program

Reception with adjacent administration area, waiting and sub-waiting areas, consulting rooms with examination area, Minor Operations room which combines with a nurse examination room for a large space to hold group hand therapy, back of house areas including: sterilisation area, staff room and storage.

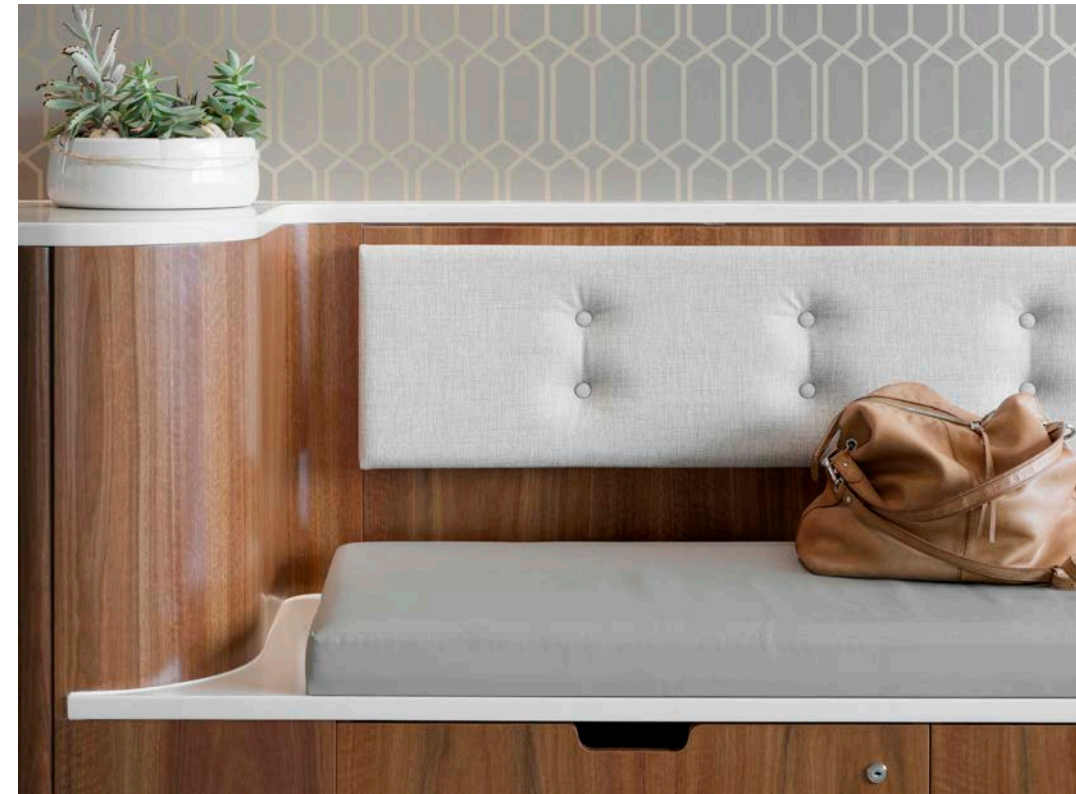
Completion 2019 Area 153m²

project description

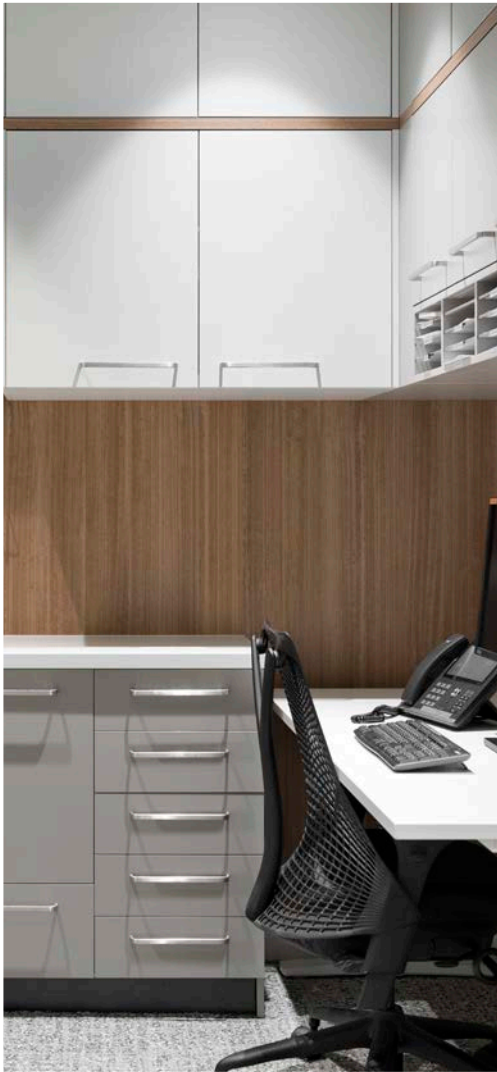
The soft form of a human body was the initial inspiration for this specialist medical suite. This, and the clients' strong desire for natural Australian timber finishes to be used throughout, lead to a simple and orderly design. But simple was not to be dull. The winding curves of clean white corian steadily leads your eye from the entry, along the refreshment station, continuing uninterrupted towards the waiting area with integrated storage contrasted by warm timber tones.

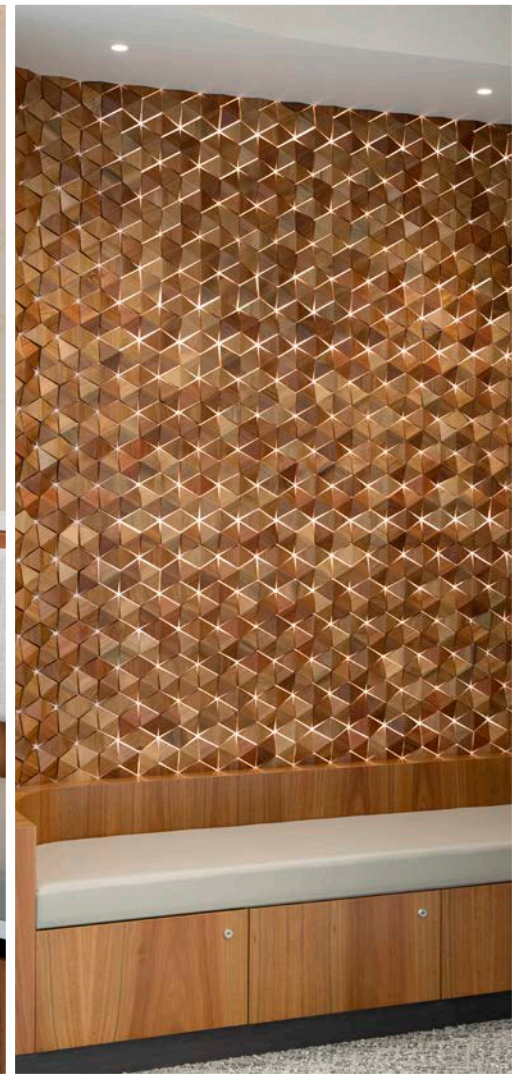
The waiting area was to enhance a connection with the surrounding suburb, with abundant natural light to give an open and relaxed atmosphere. The private spaces for consulting and examination were acoustically treated for maximised privacy and to enhance the perceived level of intimate and personal care.

The consulting and nurse care rooms were designed with specific storage requirements, custom integrated joinery featuring timber details. The sterilisation space was planned with a strong connection to the minor operations room and to facilitate better work flow order.



case study: brisbane hand and plastic surgery





case study: so-gi



case study: so- gi

snapshot

Imaging

program

Main reception and waiting room, 4 ultrasound rooms with integrated toilets, counselling room, grief room, Director's office, reporting, administration office, and staff room.

Completion 2006 Area 180m²

project description

Located at Southbank Parkland this 'day-spa' like establishment offers more than the usual clinical atmosphere generally associated with ultrasound facilities. The client brief was to ensure that the ultrasound experience is made more enjoyable and relaxing by removing the cold and clinical feel of the environment. This was achieved with a casual, fluid built form, café atmosphere, textural aesthetic, sensual music and comfortable furnishings. 'In-room' comfortable sofas and large screen imagery to show the developing child are on offer for family members to enjoy. The experience is further heightened by free flowing corridors and calming imagery displayed in the ceilings.

"It is an absolute pleasure to recommend Base Architecture for commercial design. Shawn and his team at Base are young, dynamic and very capable architects whose passion for cool, contemporary and practical design oozes out in every meeting and design solution! Base was able to take our brief of removing the usual clinical drabness of a medical practice and instead develop a spa like ambience patients could enjoy whilst still feeling like they were in a safe specialist centre"

— stephen sinnot —



case study: springwood general



case study: springwood general

snapshot

General Practice, Travel Medicine and Skin Cancer Clinic, Springwood

program

Main reception, waiting areas including a family zone with kids play area, 9 consulting rooms, 2 procedures rooms, exam room, staff room, 2 nurses stations, sterilization station and storage areas.

Completion 2014 Area 340m²

project description

The brief was to extend an existing practice that had an established clientele and brand. There was a need to include further consulting rooms and expand the services offered.

With an established work culture that focused on family-like attention to patients, the design was to reflect family-oriented healthcare, in an approachable atmosphere. The design response was to allow for both the pre-established social interaction of the patients and staff, and the privacy required when dealing with personal matters. The doctors wanted to ensure their existing clientele felt well cared for and comfortable in the new space, and add to their client base by having a modern and up to date practice.

The result is a bright, modern practice that reflects the vibrant personalities of our clients, and therefore offers an improved environment for a larger clientele. Storage areas and joinery allow for an organised "living room" type of space where patients wait, watch a documentary, involve in conversation, and let the kids play.

"The most successful aspect - all the little things that were accommodated to create a better work flow of patients... and creating a better workplace for doctors and staff."

- Robyn Kastrissios, Practice Manager -



case study: springwood general





case study: eve health



case study: eve health

snapshot

Obstetrics and Fertility Specialist Clinic

program

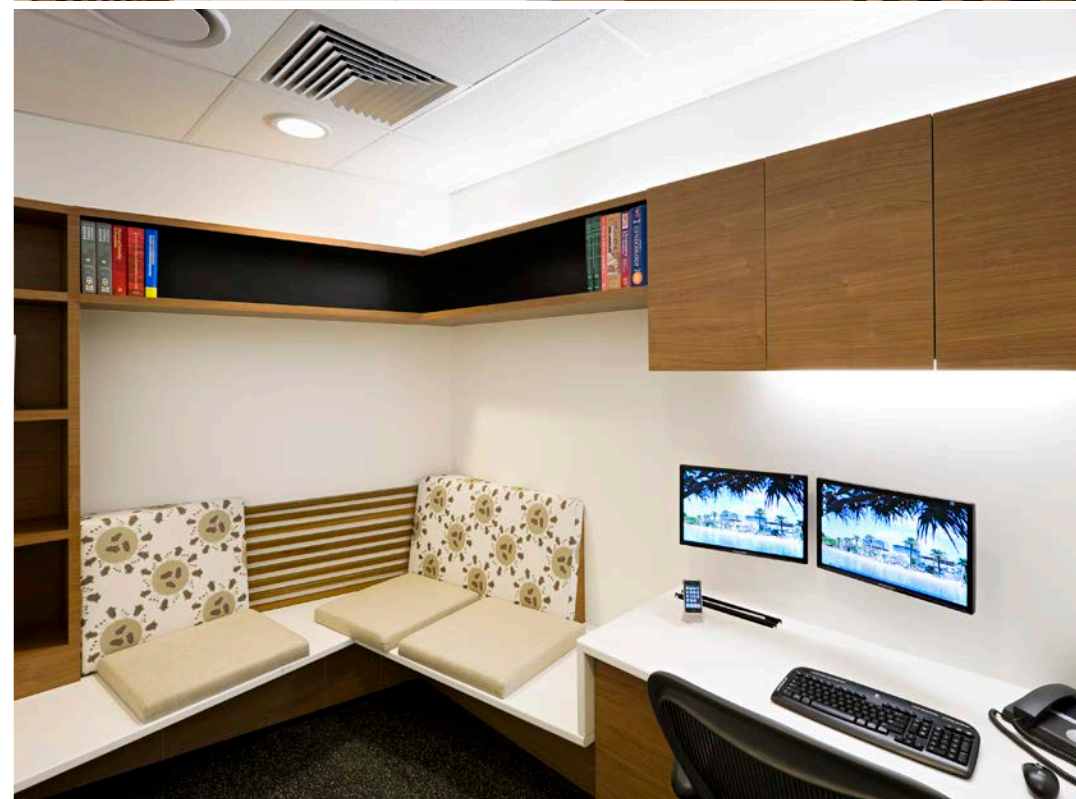
Shared reception, bathrooms and kitchen/ staff room, and separate waiting, storage, consulting rooms for both Eve Health and Queensland Fertility Group (QFG).

Completion 2009 Area 200m²

project description

The key idea behind the design of this fit-out for Eve Health was to create an environment that would ensure that patients coming to the office would feel at ease and welcomed. Keeping in mind that the patients using these facilities are dealing with a wide variety of potentially sensitive circumstances, the design of the office is focused on the comfort, support and privacy of the patients.

This fit-out was a great opportunity to challenge the stereotype of sterile, overbearing medical facilities, encouraging a move to medical environments that are warm, welcoming and generally inviting places to be.



THANK YOU



07 3352 5899

200 Days Road
PO Box 165
Grange, Brisbane,
Queensland 4051

info@basearchitecture.com.au
www.basearchitecture.com.au