

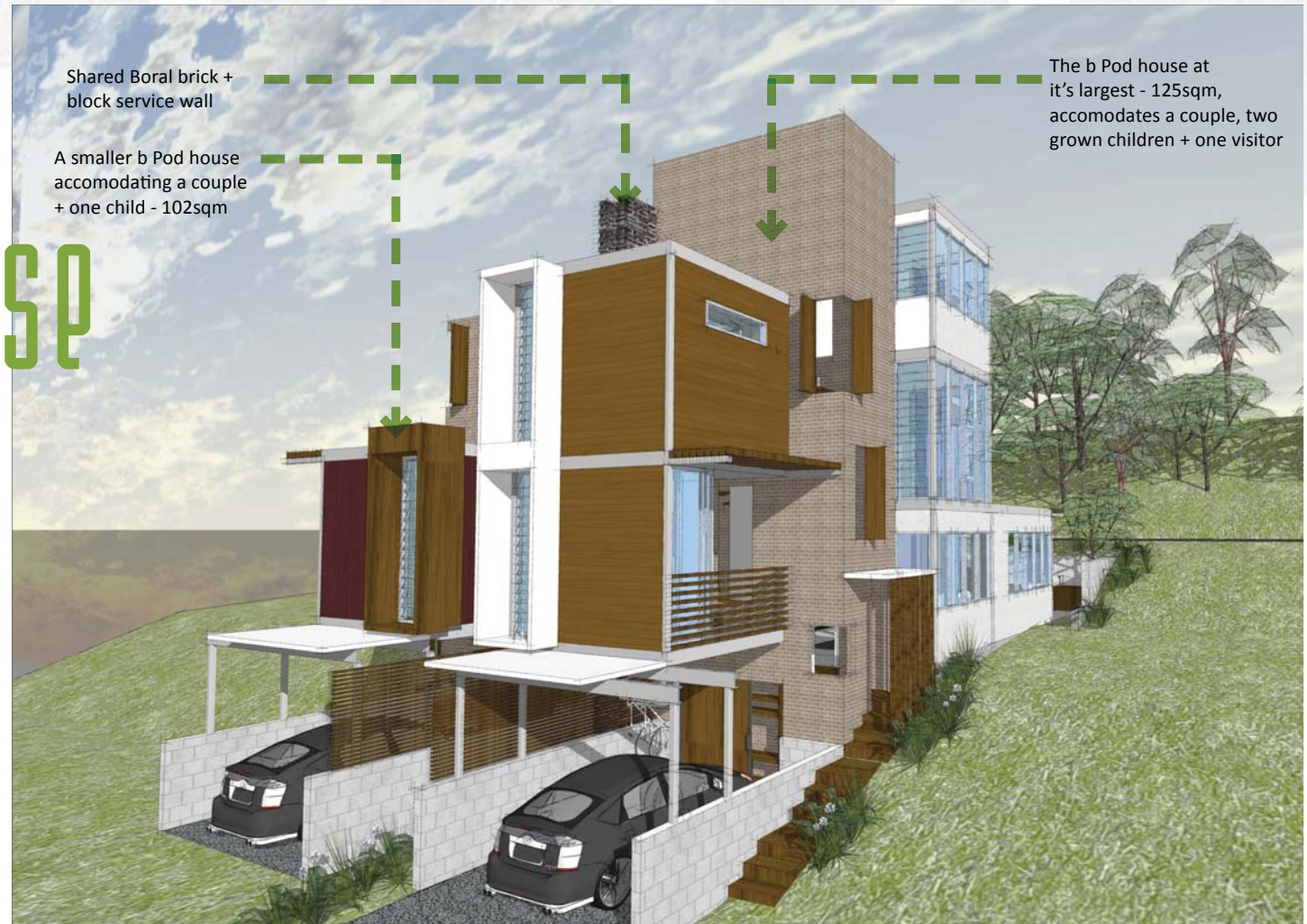
boral design competition 2010

bPod house

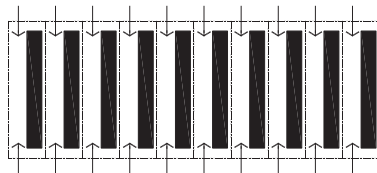
urban strategy

The compact suburban site is a defining condition for this site, and needs to be considered as part of an integrated system that affects the wider local area. The bPod system of house is influenced by proximity, density, durability, adaptability and sustainability. It recognises the idea that the house is not seen in isolation, but working together with its neighbours to achieve sustainable and flexible spaces inserted in a dense urban grid that still allows for private outdoor spaces key to Australian life style.

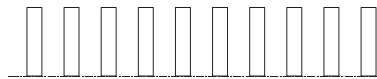
After analysing the evolution of the site configuration, from traditional suburban house in the centre of the lot; to build to side boundaries with aligned front and back setbacks, this design proposes an evolution of the site. Alternating front and back setbacks, and building to both side boundaries with a shared party wall results in alternating main entrances/back yards creating open and enclosed spaces with controlled privacy.



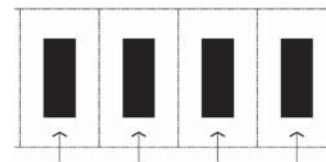
plan



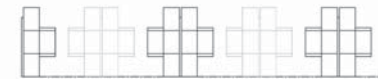
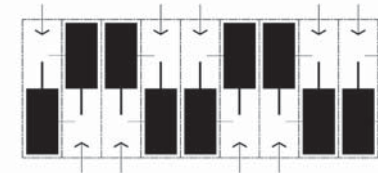
elevation



multi residential



single dwelling



bPod

the evolving family

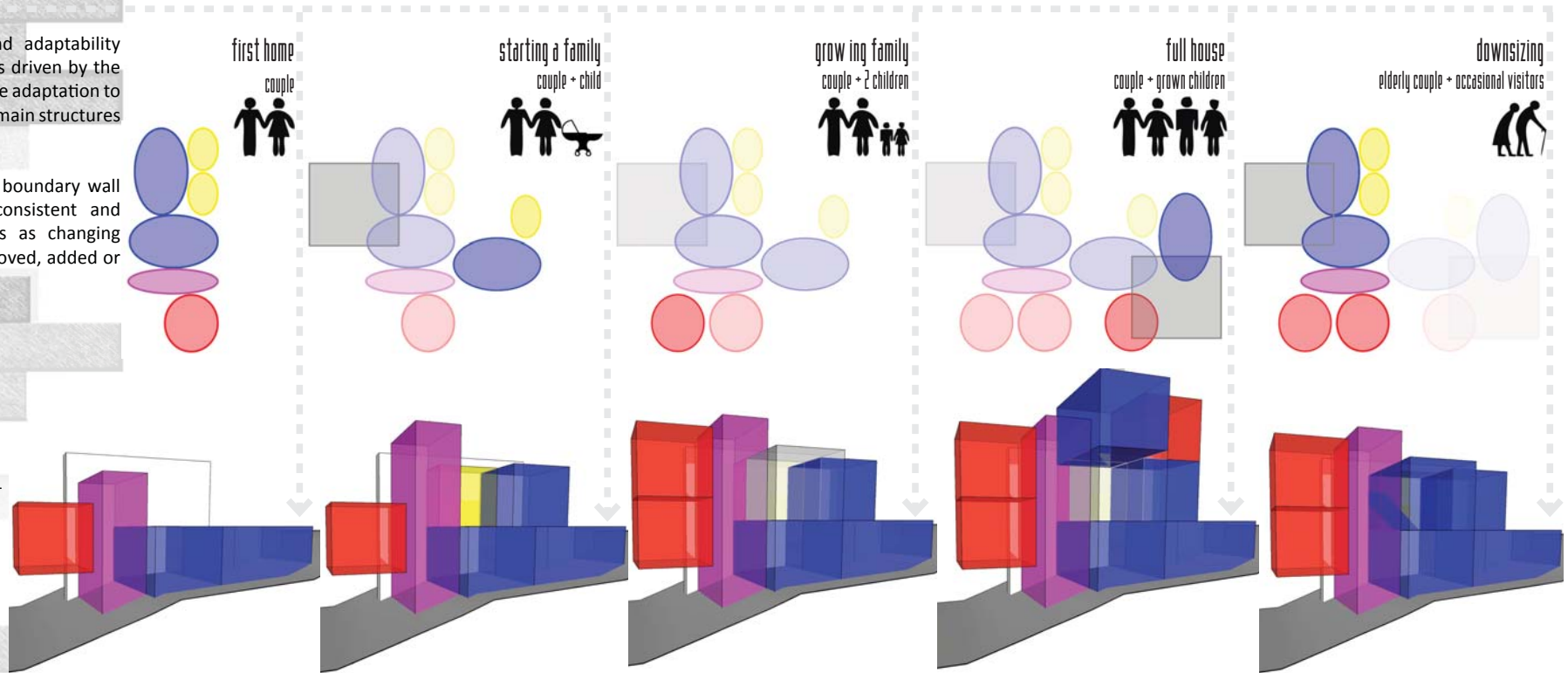
With sustainability, durability and adaptability in mind, the bPod House Design is driven by the evolving family. It aims at easing the adaptation to family changes whilst keeping the main structures as the solid pillars of home life.

The system works with a shared boundary wall as the main structure, solid, consistent and permanent, supporting the Pods as changing elements that can be replaced, moved, added or eliminated as the family evolves.

the b Pod system

legend

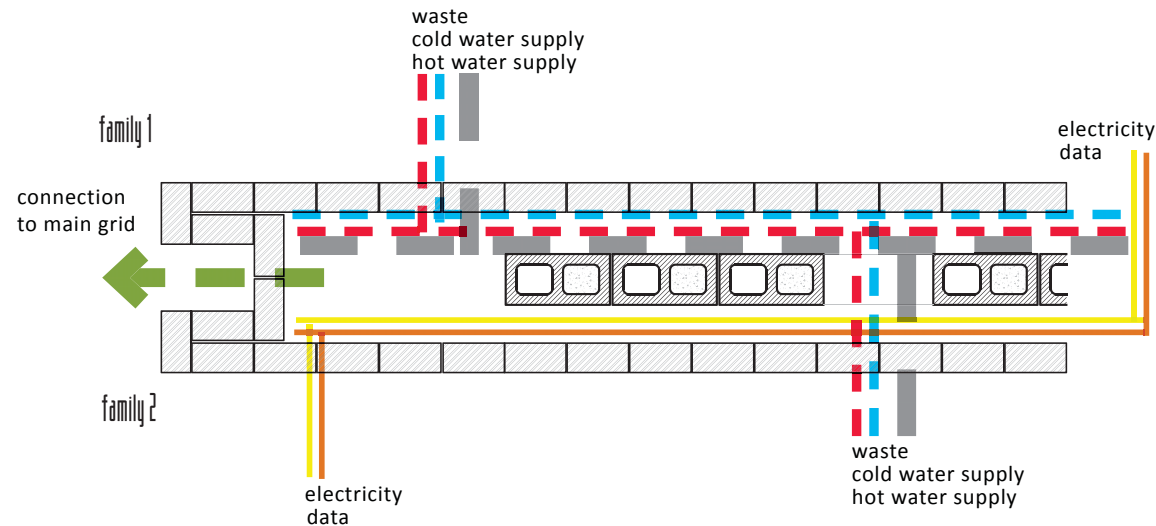
- bed Pod
- living Pod - living, dining, multi-purpose
- service Pod - kitchen, laundry, powder, bath
- vertical circulation
- void Pod
- service wall



the wall

The wall with the integrated services and vertical circulation is the pillar of the home life, providing the stable system that supports the flexibility of the pods. The sturdy nature of this element is reflected in the materiality, with Boral concrete blocks and bricks providing permanence to an otherwise adaptable and ever-changing concept.

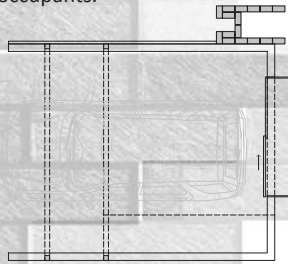
This concept revolves around the idea that the wall will be constructed as part of the wider development, so rather than buying an empty site, it already has the shared wall with water, sewer, electricity, communication and any other services connected. This would minimise construction and infrastructure costs, as well as providing the basic structure of the urban strategy, defining open spaces and setbacks.



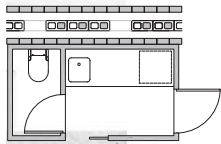
The external facade of the wall is constructed from face bricks, which provides a feature internally where the pods join up to this brick face. Behind this, a core-filled concrete block structure supports the services. The face brick wall can be broken through where necessary as the arrangement of pods dictate the access to services. This system is repeated on both sides of the wall, as the adjoining house breaks through for access to services on the other side of the boundary. With adjoining dwellings accessing servicing from the one wall, it minimises the need for extensive earthworks for infrastructure. Future services that will be required on site are also only needed to be integrated within the wall, and then connected to pods as required, rather than distribution across a series of sites.

the sample b Pods

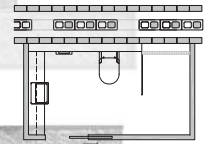
Based around a steel portal frame, the pods provide a versatile base for the customisation of each pod. The pods structure can be changed as required, using Boral structural timber and wall cladding, or Dowell windows and doors to define the enclosure. These materials allow a lightweight, adaptable solution for each pod. Within this flexible system, each B POD house can be made to suit the individual needs of its occupants.



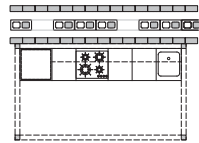
carport
space without being constructed, storage and access with an entry statement



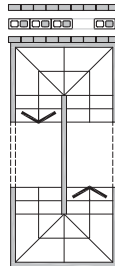
the laundry-powder room
Multi-use service zone for all



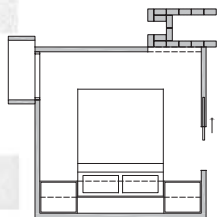
the bathroom
simple, efficient and compact



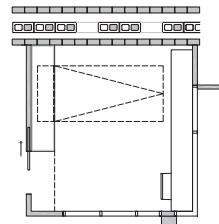
kitchen
the centre of the service core with dining, living and outdoor connections



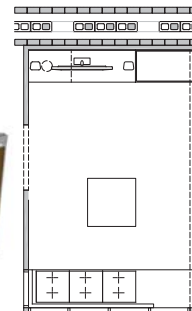
the stair
the core of the house with access to all spaces



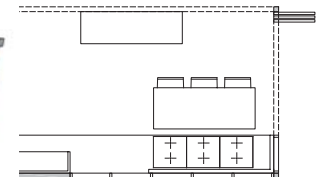
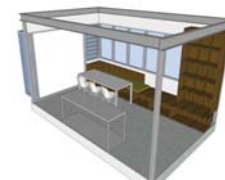
the bedroom
retreat, cosy and functional



multipurpose
flexible for all times and activities, kids playroom by day, quest room by night



living
open plan connection to outdoor space



dining
indoor, outdoor or both



materials

This design incorporates materials which are:

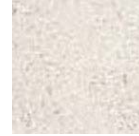
- cost effective
- environmentally conscious
- readily available
- durable - withstand dormant periods held in storage as well as transport
- sustainable
- flexible - adapt to the lifestyle of inhabitants, future technology and living preferences
- easily adaptable to suit varied design preferences



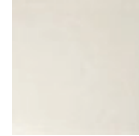
Unseasoned (Green) Hardwood



nuvo fusion clay bricks blue rio



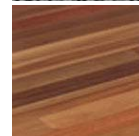
full height designer block alabaster



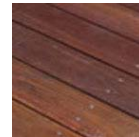
concrete paver aspenstone vanilla



borastone decorative concrete milkyway



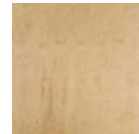
timber flooring 19mm solid strip



timber decking spotted gum



nuvo clay bricks alloy



plywood premierwood

b Pod